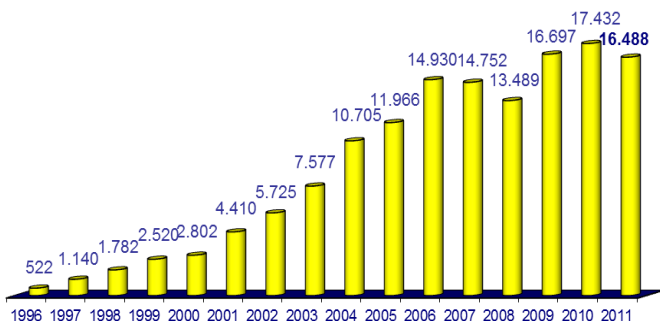




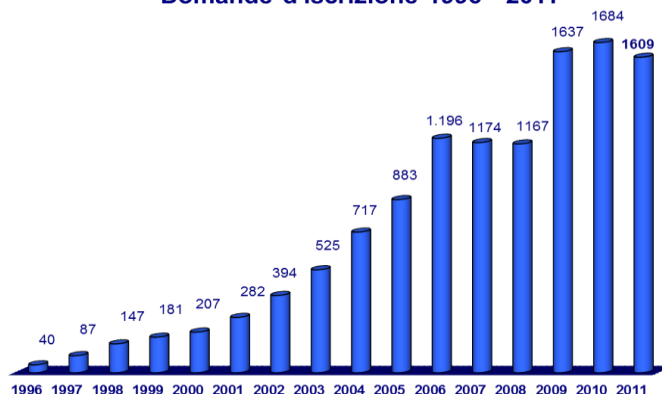
Volontariato in Montagna
 — Alto Adige · Südtirol —

Risultati 2011

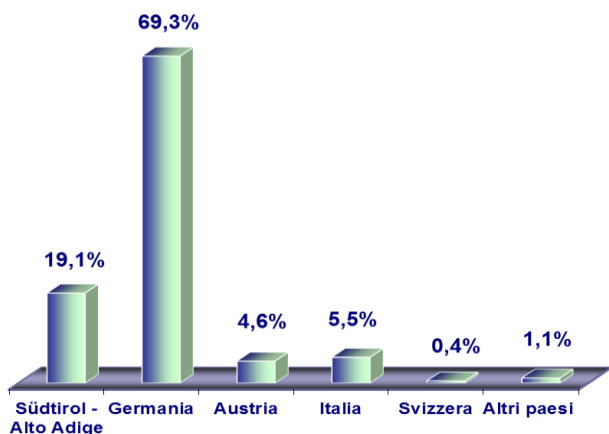
Andamento giorni di intervento



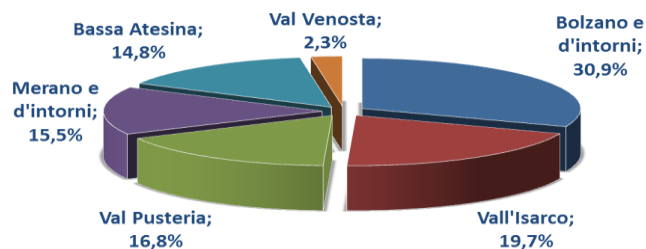
Volontari
 Domande d'iscrizione 1996 - 2011



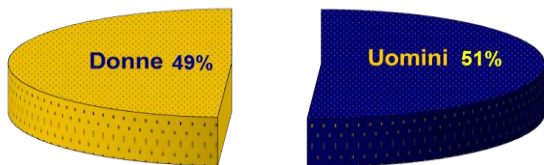
Provenienza dei volontari



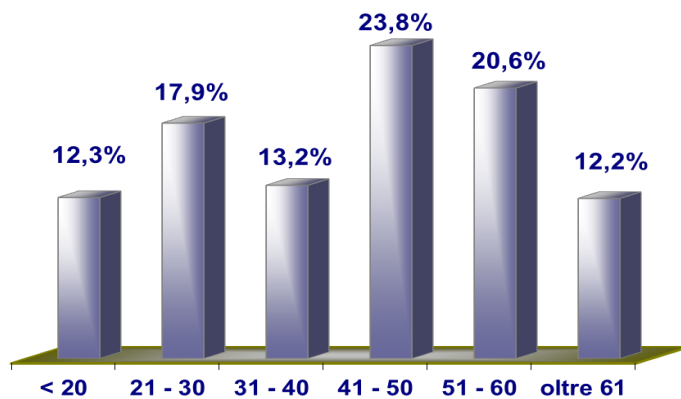
Volontari dell'Alto Adige
 Residenza



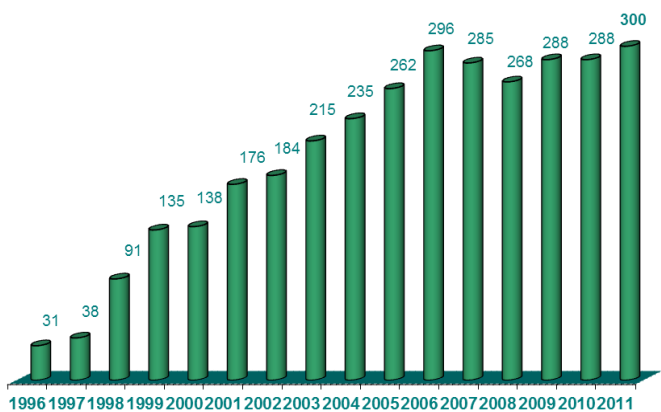
Distribuzione Uomo - Donna



Distribuzione per fascia d'età



Masi
Domande di richiesta 1996 - 2011



Contadini
Provenienza circoscrizionale

